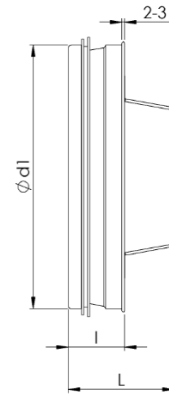
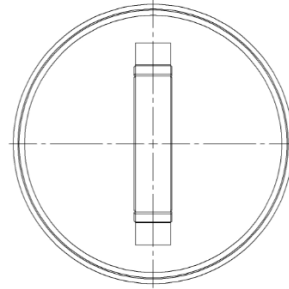


End cap with handle ESH / ESHS



Description

Metal air duct end cap with handle. Male type end connection.

ESH – end cap without sealing

ESHS – end cup with sealing

Technical data

Construction Material galvanized steel or other metal.

Sealing made from EPDM rubber.

Standard insertion length 33 mm and 43 mm, optionally can be ordered in other lengths.

Dimensions

Type	$\varnothing d_{1\text{nom}}$ [mm]	l [mm]	L [mm]	m [kg]
ESH80	80	33	63	0.09
ESH100	100	33	63	0.11
ESH125	125	33	63	0.15
ESH150	150	33	63	0.18
ESH160	160	33	63	0.20
ESH180	180	33	63	0.23
ESH200	200	33	63	0.26
ESH250	250	43	73	0.40
ESH315	315	43	73	0.55
ESHS80	80	33	63	0.10
ESHS100	100	33	63	0.12
ESHS125	125	33	63	0.16
ESHS150	150	33	63	0.20
ESHS160	160	33	63	0.21
ESHS180	180	33	63	0.24
ESHS200	200	33	63	0.28
ESHS250	250	43	73	0.43
ESHS315	315	43	73	0.58